

2023-24 Impact Report

OUR MISSION

Communities In Schools® surrounds students with a community of support, empowering them to stay in school and achieve in life. Communities In Schools of Northwest Michigan (CISNWM) is committed to advancing community school principles across Northwest Michigan, with focus on the evidence-driven CIS framework of integrated student supports. We aim to prioritize the highest need school communities based on criteria including:



High-priority schools

identified as any school eligible for Title I funding and/or underperforming on key MDE accreditation metrics (math/English achievement gaps, chronic absenteeism)



Rural communities

where funding for and availability of supportive resources are scarce.



Ability to establish continuity of CIS presence

from elementary school through high school within school progression systems.

Our Footprint

	SCHOOLS	STUDENTS
Mancelona Public Schools	3	768
Kalkaska Public Schools	2	710
Ellsworth Schools	1	77
East Jordan Schools	2	620
	DISTRICTS	SCHOOLS
	4	8
		STUDENTS
		2175

A **Tier I** service for Communities In Schools of Northwest Michigan focuses on providing universal support to all students within a school. These services are designed to meet the general needs of the student population and create a positive school environment. Examples include programs that promote school-wide initiatives such as positive behavior reinforcement, academic workshops, or providing basic supplies like school materials or snacks. These services aim to ensure that every student has the foundational support needed to succeed academically and socially, regardless of their specific circumstances.

OUR STUDENTS

TIER 1 IMPACT

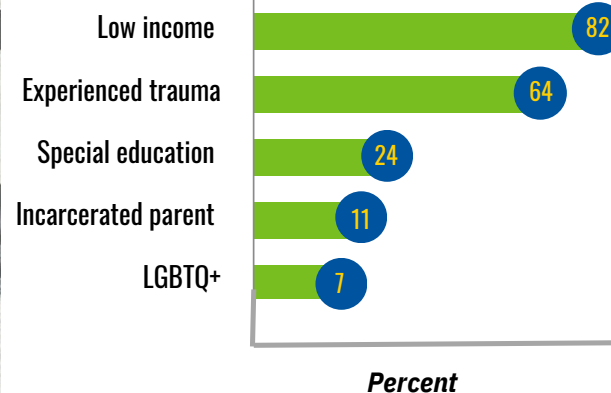
297
Supports

1,597
Hours

2,858
parents/families
served

3,776
basic needs
items provided

32,298
(total number includes students/
families served more than once)
total students
served

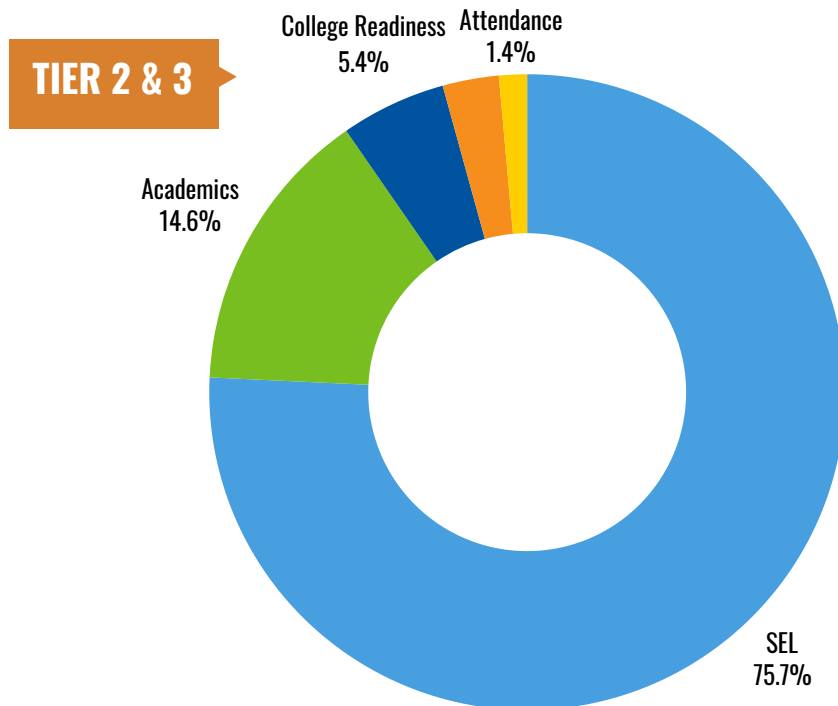


Percent

OUR VISION

Communities In Schools® (CIS®) is a national organization that ensures every student, regardless of who they are, their ability, zip code or socioeconomic background, has what they need to realize their potential in school and beyond. Working directly inside more than 3,000 schools across the country, we connect students to caring adults and community resources that help them see, confront, and overcome the barriers that stand between them and a brighter future. Together, we build a powerful change movement made up of peers, students, and alumni committed to building an equitable path to education for future generations.

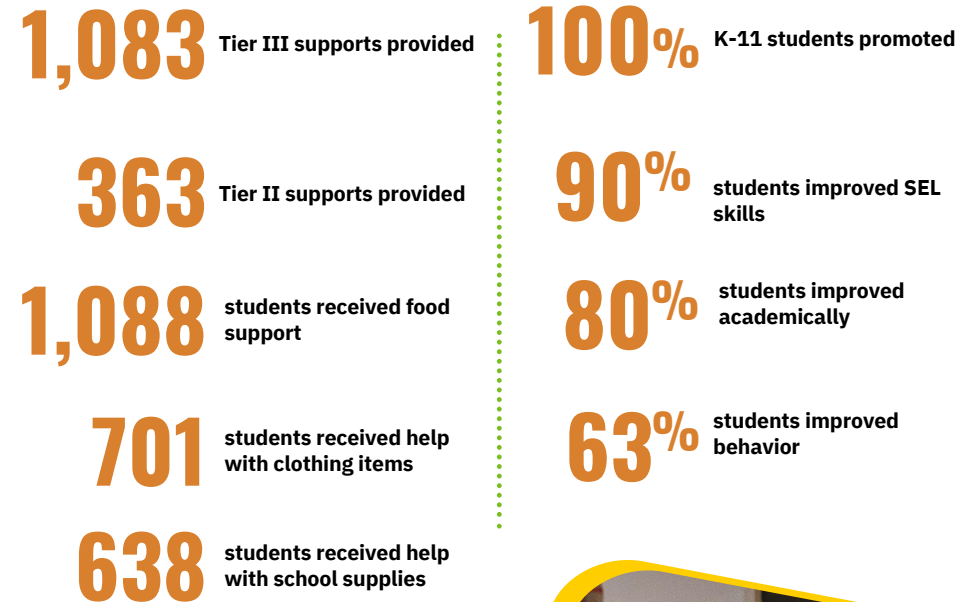
Network Impact



Tier II services target students who need additional support beyond what is provided in Tier I. These services are for students who may be struggling with specific academic, social, or emotional challenges. Support is often more targeted and includes small group interventions, mentoring, or counseling. For example, students might receive extra tutoring, social skills development, or help managing stress and anxiety. These services aim to provide more focused assistance to ensure students stay on track.

Tier III services are the most intensive and are designed for students with significant, individualized needs. These services involve one-on-one support, often in collaboration with families, mental health professionals, or other community resources. Students may receive specialized interventions like intensive academic tutoring, therapy, or crisis management. The goal is to provide personalized support to help these students overcome major barriers to their success in school and life.

OUTCOMES



TIER 2 & 3 IMPACT

264

case managed students

1,446

supports provided

100%

students with college readiness goal reached their goal

22

graduated students, 100% of case managed seniors

714

SEL supports provided

